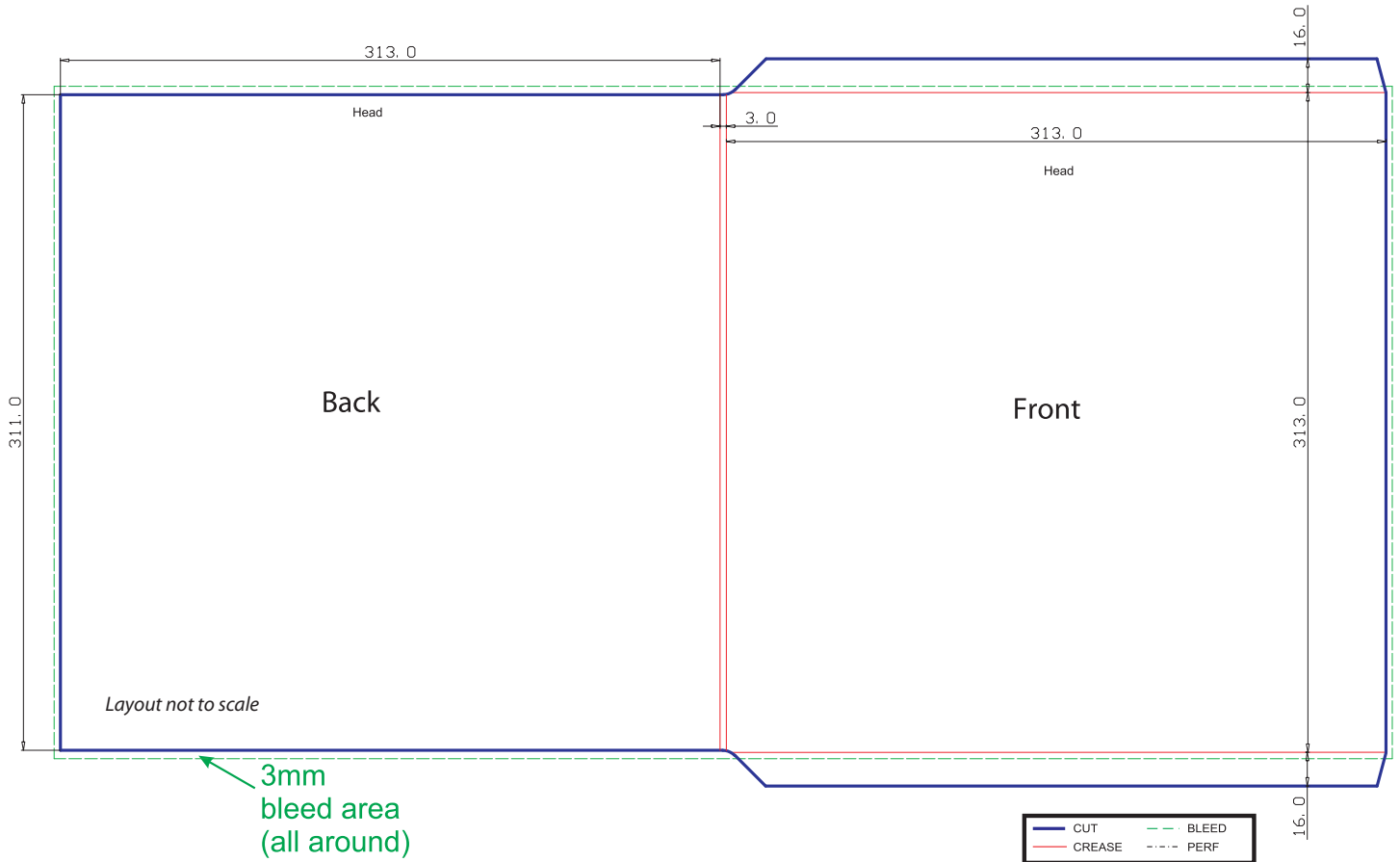




12" Vinyl Sleeve (313mm x 313mm), 3mm Spine Specification

1) One project with 3mm bleeds on every side (according to the draw):



2) Offset printing (standard colour processing CMYK or special colours PANTONE®).

3) Artwork must be supplied with one of the file formats shown below and include fonts converted to curves.

PC / MAC	ILLUSTRATOR	PHOTOSHOP	INDESIGN	QUARK	TIFF	PDF COMPOSITE
----------	-------------	-----------	----------	-------	------	------------------

ATTENTION! After receiving the artwork for paper parts, our graphic designer will prepare a JPEG file or a low resolution PDF and send it back to the customer for approval.

4) Under Colour Reductions (UCR), overall ink coverage must not exceed 320%.

5) Solid areas of black must be backed with no less than 40-50% of cyan.

6) Trapping is necessary to compensate for register tolerance when printing.

7) Total trimming tolerances of +0.5mm are essential for finishing. This should be taken into consideration for the layout and type area design. Care should also be taken that tolerances of +0 /-1mm are maintained with the trimmed format of the final product.

8) Colour guides must be supplied with all process colour artwork submitted for printing of paper parts. We accept the following types of colour guide: Cromalin / Wet Proof / Matchprint (line screen of 150lpi, resolution of 2540dpi). Not providing the colour proof by the customer means that they will accept the print without a colour proof and that they cannot lay claim to any incompatibility of colour.